

# STAT REPORT

## President's Message: A Fond Farewell

### 2011 Board of Directors

PRESIDENT: Tracey Walter, RMT  
[2tsinapod@gmail.com](mailto:2tsinapod@gmail.com)

VICE PRESIDENT: Deedee Safikhani, CMT  
[dms0110@gmail.com](mailto:dms0110@gmail.com)

TREASURER: Sherry Craig  
[scraig7118@comcast.net](mailto:scraig7118@comcast.net)

SECRETARY Betty Saxton, CMT, AHDI-F  
[blscmt@yahoo.com](mailto:blscmt@yahoo.com)

CHAPTER REPRESENTATIVE:  
Nancy Bass, CMT, AHDI-F  
[nancybassmt@yahoo.com](mailto:nancybassmt@yahoo.com)

#### COMMITTEES

BYLAWS, POLICY AND PROCEDURES  
Deedee Safikhani, CMT  
[dms0110@gmail.com](mailto:dms0110@gmail.com)

Betty Saxton, CMT, AHDI-F  
[blscmt@yahoo.com](mailto:blscmt@yahoo.com)

CERT CONNECTOR  
Betty Saxton, CMT, AHDI-F  
[blscmt@yahoo.com](mailto:blscmt@yahoo.com)

FUNDRAISING  
Open

LIBRARY  
Open

MEMBERSHIP  
Nancy Bass, CMT, AHDI-F  
[nancybassmt@yahoo.com](mailto:nancybassmt@yahoo.com)

NEWSLETTER  
Pat Bowen, CMT, AHDI-F  
[pat\\_bowen@msn.com](mailto:pat_bowen@msn.com)

SUNSHINE  
Sunny Jezewski  
[Barsun10@comcast.net](mailto:Barsun10@comcast.net)  
Mary Moore  
[Mamoo8141@bellsouth.net](mailto:Mamoo8141@bellsouth.net)

WEBMASTER  
Betty Saxton, CMT, AHDI-F  
[blscmt@yahoo.com](mailto:blscmt@yahoo.com)

As we bring yet another year to an end and I prepare to step down, I want to reflect on what an amazing 2 years it has been.

When I first took office of President back in January 2010, I had no idea what I was doing or even what I was getting myself into. All I knew was I didn't want to see the chapter fold. I also came in with a "big head" and was a "control freak" but it didn't take too long to realize that wasn't going to work; there's no I in TEAM. The Space Coast Chapter has come a long way since with 30+ members strong who consistently dedicate their time and support, and without all of you, this journey wouldn't have been possible.

While holding office of the President is no small feat, it is not without the Board of Directors and its Members that it all happens.

One of the toughest challenges was how to invoke member participation, and I think we have done that over the last 2 years by giving back to the members who support the chapter with such things as CMT/RMT credentialing award and supporting our members to attend state. Another thing is securing a dedicated location that is pretty much central to our members with no cost to the chapter; hence, we can afford to give \$50 and free registration to the next symposium for all who become credentialed, pay half of 4 early bird registrations to state, and cater all meetings.

As all of you or at least most of you know, one of my greatest fears was speaking in front of a crowd. As well, going around the room introducing ourselves was also very intimidating to me. I have since overcome that fear and now, while I might not be that great at it, I am no longer afraid to do it.

The most honorable and memorable accomplishment for me is that the Space Coast Chapter was awarded the Sunshine Award at this year's state meeting for our outstanding chapter achievements through innovative ideas promoting chapter growth. For those of you not there, imagine my surprise and shock in accepting this award and the speech I had to make.

I was terrified to take that stage in front of many I have never even seen before, but you know that old saying, "What doesn't kill us, only makes us stronger."

Being a part of this chapter, helping and watching it grow and getting to know each of you better has truly brought me out of my shell. I hope over the last 2 years I have inspired some of you not only to reach out of your comfort zone but to think outside the box. I truly hope you will remain an active participant in our chapter and your career for years to come.

Congratulations to your 2012 Officers:

President: Deedee Safikhani, CMT  
Vice President: Nancy Bass, CMT, AHDI-F  
Treasurer: Sherry Craig  
Secretary: Pennie Tyson

I know that I am leaving you in good hands, and I will always remain an active participant in this chapter whether or not I sit on the Board of Directors.

Don't forget, our annual Holiday Brunch is December 3, 2011. We will be accepting your 2012 renewal dues and any member who gets a NEW member to join will be entered a second time for our drawing to pay half of your state early bird registration fee, which will be drawn at our Symposium March 10, 2012.

Wishing you all a Safe and Happy Holiday Season,

*Tracey*

Tracey Walter, RMT  
Space Coast Chapter President  
[2tsinapod@gmail.com](mailto:2tsinapod@gmail.com)  
[www.ahdi-fl.org/scc-index.htm](http://www.ahdi-fl.org/scc-index.htm)  
[www.ahdi.fl.org](http://www.ahdi.fl.org)  
[www.ahdionline.org](http://www.ahdionline.org)



## Member Spotlight



In the Spotlight: **Mary Moore**

Hello everyone,

I was asked to tell my story, so here we go; maybe you can get a laugh or two. I was actually born in Pontiac, Michigan, about 20 miles from my home town of Union Lake. It was a very small town, and I kid you not, everyone knew everyone and all of your business as well. If you were out and got into any kind of trouble, chances were that your parents knew about it before you got home.

I had one older brother and one older sister for the first 7 years of my life, Pete and Ida. When I was 7, my sister Penny was born, and when I was 14, my sister Tracey was born. My parents both came from large families: my father with 9 siblings and my mother with 5 siblings. We were a pretty close family, with my parents' families all semi-growing up together. Some of the men dated the same women and even married the same woman (of course, not at the same time). When we got together, it was quite a bunch. I now have six nieces and one nephew, six great nephews and seven great nieces. I have too many cousins to mention; however, I have two aunts (my mother's sisters) who are still very close and loved very much by our families. I am married, now for 22 years, and we have no children. My pets are my children, and sometimes they act like children. We just adopted a new dog, Rudi, and he is very smart for 6 months old. He is quite the challenge, especially for my cat, Samantha, who was a stray we took in after a neighbor left her behind.

I have only been doing transcription for about 2-1/2 years, and loving it, I might add. It is very challenging, but working at home is a plus. I started working at 16 as a meat wrapper in a family-owned grocery store. My father told me I was too young to start working, and that I would be working for the rest of my life. Boy, he was right, and of course I didn't listen or believe him. When I came to Florida, I worked at Babcock Building Supply, where I met my husband. Not long after that, I got a job at Holmes Regional Hospital working in the cafeteria. I worked my way up to supervisor before I left there. Next, I worked at Sea Pines Rehabilitation facility and that is where I first got into medical records. While there, I hooked up with an ROI (release of information) company, and the rest is history. I was with that company for about 16 years, working at different facilities from Indian River to the Cape. Eventually, I became their Space Coast Manager, handling Cape Canaveral, Holmes Regional, Sea Pines and Palm Bay hospitals. I did a lot of depositions and court appearances as well, for all the above.

One day while driving down the road, I heard an ad for a seminar on medical transcription. At that point, I was so burnt out with ROI, I was willing to do anything. I had always been intrigued with medical transcription, and in fact, when I worked at Sea Pines, my boss would let me practice there in my spare time. I should have started my career right then and there. Oh well, the past is the past. At any rate, I called my sister, Tracey, and we went to the seminar, signed up for school and literally taught ourselves. In the meantime, I did quit my job with ROI and started working in medical records at Palm Bay Hospital until a job opened in transcription. I am very fortunate to have worked at Holmes Regional as a contractor as well as having people who had faith in me.

I have been a member of the Space Coast Chapter for about 4 years now and have really enjoyed all of our meetings and camaraderie. I recently had an opportunity to attend one of their board meetings, which was very insightful. They are a great group and always willing to help their fellow

members. I did join AHDl while in school. I did let it lapse for a while, but recently rejoined. I have been to a couple of symposiums and one state meeting. It is all great and very educational.

When I am not working or studying as of late, I like to work out in my yard, play with my dog, and I love to shop. I do some crafting once in a while, but I have to be very inspired for that. My favorite TV show is *Dancing With the Stars*. Not a lot to think about there, and when it's over, it's over. I do watch other shows, but nothing that I just have to see. I also enjoy spending as much time as I can with my sister, Tracey, and vacationing with all of my sisters and sometimes families, when I get the chance. We try to do at least one vacation a year with just the sisters, but that doesn't always work out. Anyway, I love my family and really cherish anytime spent with all of them.

I am getting ready to take my test for credentialing this week, and would encourage anyone in this field to do the same. I have worked very hard for this, and even though it is not a job requirement, per se, it will be very fulfilling for me and I am sure it will matter to my employer as well.

Thank you all so much for reading this, and thank you for all your encouragement and letting me be a part of Space Coast Chapter and your lives.

## A Few Words from our VP

### A FEW OF MY FAVORITE THINGS....



#### **Li'l Red Notebook by Horus Development**

This is a nifty, inexpensive tool MTs can use to categorize terms, which you can import into your document. Try it free for 30 days; then buy it for less than 20 bucks. [www.horusdevelopment.com](http://www.horusdevelopment.com)

#### **labtestsonline.org**

An excellent resource for lab tests in lay person's terms that's free and never asks you to register for an account with them. You can search via lab test name or condition/disease. It provides synonyms for various studies as well.

#### **rxlist.com**

On the tab titled Drugs A-Z, you'll discover an alphabetized list of drugs that's easily searchable. It provides the generic and brand names as well as dosages and indications, side effects, etc. Another site that never asks you to register for use.

#### **whonamedit.com**

Get it? Who named it? It's a dictionary of medical eponyms. For example, Apgar score is named after Virginia Apgar, MD, who initially practiced as a general surgeon but then switched to anesthesiology. Did you know she was an accomplished cellist and violinist who once 'liberated' the curly maple shelf in a phone booth to use it to make the back of a viola? This site divulges the most fascinating details of the person behind the eponym. I've oftentimes found the most obscure eponym at this site.

#### **Florida Medical License Search**

With the URL of <http://ww2.doh.state.fl.us/IRM00PRAES/PRASLIST.ASP> is a great tool to narrow down to which "Dr. Shah in Orlando" the physician dictating the report you're transcribing would like to send a carbon copy.

### **epodunk.com**

This is a great site listing cities and counties in the various United States. Click on the state and up pops a list of the towns, villages, and cities in that state. Click on a city to discover its population, elevation, median household income, newspapers, hospitals, etc. It sometimes shows pics of old postcards and photos of the town. I've found this site useful when a physician dictates the patient's cardiac cath was performed in some strange-sounding city in Delaware. And before some of you comment that you'd either spell the city name phonetically or leave it out altogether, consider the possibility the patient's records from that cardiac cath facility will be sought, so getting the name of the city right helps HIM personnel faxing the records request.

### **medscape.com**

Admittedly, you have to register for an account to access the wealth of information, but at least doing so is free. You can even earn CE's by reading an article and taking a short quiz after. You can sign up for weekly e-mails containing journal articles and video presentations. For example, one article is titled *Turmeric Enema May Equal Vancomycin for C Difficile Colitis*. Now that's interesting reading! Next time you use or eat a dish with turmeric, I'm sure this article will come to mind. This site and its articles are extremely helpful for keeping up on the latest treatments in healthcare.

### **Common Errors in English**

This website Paul Briens, Emeritus Professor of English at Washington State University, first created in 2000. It offers a great rundown of, well, common errors in English! For example, it covers the erroneous redundant term I'm sure you probably heard more than once, "irregardless." Check it out at <http://www.wsu.edu/~briens/errors/>

### **Backpack**

This nifty website (<http://backpackit.com/>) allows you to create pages to store information, create lists, calendars, etc. You can keep it to yourself or share with others. It's just so much fun for some reason! I guess I just like making lists.

### **Wheeless' Textbook of Orthopedics**

For obscure phrases such as "arcade of Struthers" or "scaption," check out this website (<http://www.wheelessonline.com/>). It's free and easy to search. Anytime I'm stumped orthopedics wise, this is my first (and oftentimes last) reference. It's suborganized by joints, muscles/tendons, trauma/fractures, etc.

### **Medilexicon**

This is the ultimate abbreviation search engine ([www.medilexicon.com](http://www.medilexicon.com)). It also has a hospital directory with over 14,000 entries.

### **Neurologic Exam**

The University of Utah's website is absolutely fabulous for explaining and demonstrating with videos every component of a neurologic exam such as saccades:

[http://library.med.utah.edu/neurologicexam/html/home\\_exam.html](http://library.med.utah.edu/neurologicexam/html/home_exam.html)

### **EKG Glossary**

Another gem provided by the University of Utah School of Medicine, this one is titled ECG Learning Center in Cyberspace. It covers all terms you'll hear dictated for an EKG.

<http://library.med.utah.edu/kw/ecg/index.html> It has pics too!

Now it's your turn. E-mail our chapter's newsletter editor, Pat Bowen ([pat\\_bowen@msn.com](mailto:pat_bowen@msn.com)), your favorite websites for publication in our next issue.

Deedee Safikhani, CMT  
SCC-AHDI 2011 Vice President  
[Dms0110@gmail.com](mailto:Dms0110@gmail.com)

## Board Meeting Minutes

Space Coast Chapter – AHDI  
Board of Directors Meeting

Date: **November 5, 2011**



Meeting Called to Order at 2:30 PM by President Tracey Walter

Welcome: Pennie Tyson (incoming chapter secretary for 2012)

Minutes from August 27, 2011, meeting reviewed. One correction: Liability insurance was paid by Sherry. Minutes were approved as corrected.

### COMMITTEE REPORTS:

Treasurer – Sherry Craig: Report distributed and attached. Register ending balance November 5 \$1,112.00.

Membership - Nancy Bass: There are currently 26 Practitioner/Professional members and 3 Student Members.

Library: Natalie Webb has agreed to chair the library committee next year. Natalie was unable to attend this meeting. Tracey and Natalie will meet in December to review the library inventory and determine needs for 2012. Library materials will be kept with Natalie so they are available for loan.

Newsletter - Editor Pat Bowen: September newsletter was completed. Next publication date will be about 20<sup>th</sup>. Articles are due by November 15<sup>th</sup>. Pat has agreed to continue as newsletter editor for 2012.

Ways and Means: \$90 was collected at September meeting through selling used books and bags. Discussion regarding new fund raising ideas was tabled until January meeting, when new committee is on board.

Sunshine Network – Mary Moore / Sunny Jezewski: Mary was present. Member spotlight will be continued. There was discussion regarding availability of photos and getting the SD card from Sunny. Deedee moved that the chapter purchase a second SD card for the camera for \$25 or less. This was seconded by Nancy Bass. Motion was approved. Tracey will purchase the card.

Continuing Education / CERT Connector - Betty Saxton: No update. December meeting will not have speaker, so no credit will need to be obtained. Tracey asked how many credits SCC has offered this year. We offered a total of 7.5 credits for the year. Breakout is:

- 3.5 Medical Transcription Tools
- 1.5 Complementary Medicine
- 1.0 Clinical Medicine
- 1.5 Medicolegal

Chapter Representative – Nancy Bass: No update. State Board meeting was postponed due to family medical issues for President Susan Whatley and will be rescheduled.

Chapter Elections are underway. Tracey will send a reminder email blast and polls will close Monday, November 7<sup>th</sup>. Tracey will ensure that Kelly Fields, teller, has most current roster of National membership for tally.

## NEW BUSINESS

1. Finalize plans for December meeting. Meeting will be held December 3rd at Palm Bay Hospital from 9 AM to noon. This will be the chapter annual Holiday Brunch. There was discussion about best way to post list for members to sign up for items to bring to this potluck. It was decided that Facebook group would work the best and any members who did not wish to join Facebook (PB) would communicate their items to a board member for posting. The chapter will purchase beverages from Palm Bay Hospital. Decorating ideas included having member photos available; Mary Moore will pursue this idea. There will be no speaker. Tracey plans to discuss with members various items, ideas for baskets for the State meeting; speaker ideas for next year; meeting times and days. Attendees will be asked to bring a gift for \$15 or less for a gift exchange.

2. Meeting schedule for 2012. Dates were selected as follows:

Board of Director meetings:

- January 14
- April 28
- July 14
- November 3

Chapter meetings:

- March 10 (symposium)
- June 9
- September 22
- December 8 (holiday brunch)

In addition, dates were reviewed for newsletter publication and article deadlines:

- Publication February 1; article deadline January 15
- Publication May 1; article deadline April 15
- Publication August 1; article deadline July 15
- Publication November 1; article deadline October 15

3. Brainstorm on symposium planning. Date of March 10 was selected; decoration ideas will be St Patrick's Day. Speaker ideas: Rosina Jones – Risk Management at HealthFirst; Dr Olsson, Pain

Management; Dr Shipe, acupuncture. Also discussed speaker on feng shui; Deedee will pursue this. Will also brainstorm ideas at the holiday brunch.

4. Discuss having old chapter photos scanned. Tracey currently has several chapter scrapbooks and wants to consider scanning the pictures in order to eliminate the need to maintain the scrapbooks. She presented information from a company on line who will do 1000 pictures for \$80; additional \$30 charge if we want the photos to be kept in order. We must break the photos into groups of similar sizes prior to sending. Betty volunteered to take the photo albums and scan them herself. She would also be able to incorporate names and dates. Final result will also include a slide presentation that can be played at our meetings.

5. Discuss chapter purchasing new materials for the library. Tracey led this discussion and particular items included CMT and RMT prep along with new AHDI Book of Style. Discussion resulted in the consensus that there are members who purchased the CMT and RMT study guides who will be willing to donate these to the chapter upon successful completion of the test so there may not be a need to purchase this. The chapter has the earlier version of the BOS, and suggestion was made that we include copy of what changes were made, so anyone borrowing the BOS has the most current information. Additional discussion was tabled until January meeting when new library chair is able to contribute her ideas.

6. AHDI-FL Kickoff meeting – who is going and who needs support? There is no firm date for this meeting yet. It usually falls around the 21<sup>st</sup> or 28<sup>th</sup> of January. Once the date and speaker offering is available, we will discuss this again.

7. P&P and Bylaws need revision. Tracey would like to take this on next year, and will work with Betty.

Next board meeting will be January 14<sup>th</sup> at the home of Pat Bowen.

Meeting was adjourned at 5:05 PM

Respectfully Submitted,  
Betty Saxton, CMT, AHDI-F, Secretary

## REMINDER - It's That Time of Year Again!

As a reminder, the Space Coast Chapter Membership dues run from January 1<sup>st</sup> through December 31<sup>st</sup> each year. For all of you who have not renewed or for anyone who would like to become a member, please see the membership application in this issue of the Stat Report or download one from our website at [www.ahdi.fl.org/scc-index.htm](http://www.ahdi.fl.org/scc-index.htm).



## Chapter Rep Report - Space Coast Chapter AHDI October 2011

### **Officers 2011:**

President: Tracey Walter, RMT  
Vice President: DeeDee Safikhani, CMT  
Secretary: Betty Saxton, CMT  
Treasurer: Sherry Craig  
Chapter Rep: Nancy Bass, CMT, AHDI-F

**General Meeting on September 24, 2011:** We held our general meeting on September 24, 2011 at Palm Bay Hospital in Palm Bay, FL. We had a great turnout. DeeDee Safikhani, CMT, spoke at our meeting. Her topic was The QA MT: Ace Detective.

### **Next General Meeting:**

Our next general meeting is on December 3, 2011. The meeting will once again be held at Palm Bay Hospital in Palm Bay, FL. We are having a holiday meeting with no speaker. This will be a networking/socializing meeting. Please check the website for further details as the time gets closer.

**Board Meetings:** Our last board meeting for SCC was held on August 27, 2011 at the home of Pat Bowen. Our next board meeting is scheduled for November 5, 2011 at the home of Pat Bowen.

### **Board and general meeting schedule 2011:**

Board Meetings: November 5, 2011.  
General Meetings: December 3, 2011.

**Current Chapter Membership:** We have a total of 28 practitioner/professional members and 3 student members.

**Chapter Endeavors:** We do have quite a few members who are planning on taking the exam to get credentialed by the end of the year. We are continuing the promotion we did last year for our newly credentialed members. They will get their registration paid for our next symposium and will get a \$50 cash gift for becoming credentialed. We would like to have our whole chapter credentialed eventually.

**Membership Gifts:** We gave a free pedometer to all of our members who renewed or joined our chapter. As we get more new or renewing members, we will continue the membership gift throughout the year.

Respectfully Submitted,

Nancy Bass, CMT, AHDI-F  
Chapter Representative, Space Coast Chapter

## Membership Report

As of November 5, 2011, we have 26 Practitioner/Professional Associate members and 3 Student Members in our chapter.

Nancy Bass, CMT, AHDI-F  
Chapter Representative/Membership



### Treasurer's Report - November 5, 2011

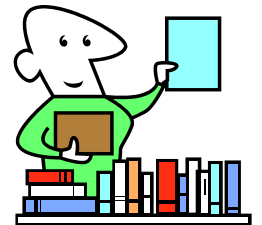
Beginning balance as of 3/31/2011	<b>\$1264.19</b>
<b>Expenses:</b> Promotions (meeting)	39.91
Catering	67.58
Speaker gift cards	50.00
<b>Income:</b> Interest earned	0.30
Fundraising	90.00
Membership	30.00
Ending balance as of 11/05/2011	<b>\$1112.00</b>

Respectfully submitted,

Sherry Craig  
Treasurer

## Lending Library

As a member of the Space Coast Chapter, AHDI, you have the benefit of using the Lending Library for only a \$20 refundable deposit. Here are some items our Lending Library currently has.



RMT Review guide  
CMT Review guide  
Professional Skillbuilding Wizard  
Medical Transcription Workbook  
MT Self-Assessment Tape #1 and Tape #2  
Multiple Choice Self-Assessment Test  
Skill Building Medical/Surgical  
SUM Advanced Tapes

Cardiology  
Gastroenterology  
Orthopedics  
Pathology  
Radiology  
Mega MT Challenge CD  
Getting Your Foot in the Door

If you are interested in checking out any materials, please contact Tracey Walter, RMT, at [2tsinapod@gmail.com](mailto:2tsinapod@gmail.com).

## Nominating Committee

We currently have openings for the following committee chairs:

### Committee Chairs

#### Program

If you are interested in this position or even sharing a committee chair, please contact me. I will be happy to give you the job description; I can also call you on the phone if you like to walk you through the duties. The chapter is only as strong as its membership.

Pat Bowen, CMT, AHDI-F  
Nominating Committee Chair  
[pat\\_bowen@msn.com](mailto:pat_bowen@msn.com)

## NEWSLETTER ADS

- Full Page yearly \$100.00 per issue \$30.00
- Half Page yearly \$50.00 per issue \$15.00
- Quarter Page yearly \$25.00 per issue \$ 7.50
- Business Card yearly \$15.00 per issue \$ 5.00
- Transcription-related classified advertising of up to 4 lines maximum shall be free of charge to Chapter members.
- Transcription-related classified advertising shall be accepted at a rate of \$1.00 per line for nonmembers.

## NEW DRUGS OCTOBER AND NOVEMBER 2011

**Exparel** (bupivacaine liposome injectable suspension): A long-acting non-opioid local analgesic for the management of postsurgical pain.

**Ferriprox** (deferiprone): An iron chelator indicated for the treatment of patients with transfusional iron overload due to thalassemia syndromes when current chelation therapy is inadequate.

**Juvisync** (simvastatin and sitagliptin): An HMG-CoA reductase inhibitor (statin) and dipeptidyl peptidase-4 (DPP-4) inhibitor fixed dose combination for the treatment of high cholesterol and type 2 diabetes.

**Onfi** (clobazam): A benzodiazepine antiepileptic drug for the treatment of patients with Lennox-Gastaut syndrome (LGS).

## Generic approvals as of August and September 2011

citanest Forte dental (**prilocaine hydrochloride/epinephrine injection**): Topical local anesthetic; used in dental procedures.

cyklokapron injection (**tranexamic acid injection**): Systemic hemorrhagic for menorrhagia.

doxercalciferol capsules: generic for **Hectorol** capsules, a D analog, serum calcium regulator for hyperparathyroidism due to chronic kidney disease.

evoxac capsules 30 mg (**cevimeline hydrochloride capsules**): Cholinergic and muscarinic receptor agonist for dry mouth due to Sjögren's syndrome.

extina foam 2% (**ketoconazole foam 2%**): Used for treating seborrheic dermatitis.

felbamate tablets: 400 mg and 600 mg; generic for **Felbatol**, an anticonvulsant used in the treatment of Lennox-Gastaut syndrome.

levetiracetam extended release tablets: Generic for **Keppra**, an anticonvulsant for myoclonic, partial-onset, and generalized tonic-clonic seizures; oral forms are also used to treat migraine headaches and bipolar disorder.

zymar ophthalmic solution (**gatifloxacin ophthalmic solution 0.3%**): A broad spectrum fluoroquinolone antibiotic used for treatment of eye infections.



## Space Coast Chapter - AHDI Holiday Brunch Saturday, December 3, 2011

*Palm Bay Hospital Auditorium  
1425 Malabar Road NE  
Palm Bay, Florida  
9 a.m. to noon*

*Please join us for the last chapter meeting for 2011, which will feature:*

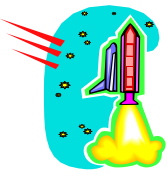
- 🔔 Potluck brunch (please [click here](#) to add your dish to the menu)*
- 🔔 Wrapped gift exchange (please bring one with value of \$15)*
- 🔔 50/50 (add this to your holiday shopping coffers!)*
- 🔔 Q&A featuring...all of us!*
- 🔔 Installation of 2012 SCC officers*

*Everyone's invited (SCC member or not)*

*Dress is your favorite Holiday Attire!*

*Remember, it's a great time to renew membership for 2012*





**Advantages of Chapter membership:**

- Networking and camaraderie with other transcriptionists, companies and vendors
- Educational and professional development opportunities
- Continuing education credits for CMTs and RMTs
- Medical and nonmedical guest lecturers
- Quarterly meetings
- Online quarterly chapter newsletter, the STAT REPORT, to keep up-to-date on current happenings, industry trends, job openings, and other helpful information

**Chapter Application/Renewal Form—2012**

Name: \_\_\_\_\_ DOB: (MM/DD) \_\_\_\_\_

Address: \_\_\_\_\_ City, \_\_\_\_\_ State, \_\_\_\_\_ ZIP \_\_\_\_\_

Home Telephone: \_\_\_\_\_ Business Telephone: \_\_\_\_\_

E-Mail Address: \_\_\_\_\_ Fax: \_\_\_\_\_

Employer: \_\_\_\_\_ Position: \_\_\_\_\_

Total years in health information/medical transcription: \_\_\_\_\_

Student: Name of School: \_\_\_\_\_ Graduation date: \_\_\_\_\_

(If applicable)

AHDI # \_\_\_\_\_ Expires: \_\_\_\_\_ CMT/RMT # \_\_\_\_\_ Expires: \_\_\_\_\_

**Chapter Membership: (Circle One)**

Full Year (Jan-Dec):	Practitioner/Professional \$20.00	Student/Postgrad \$10.00
Half Year (Jul-Dec):	Practitioner/Professional \$10.00	Student/Postgrad \$ 5.00

**Note: If you join the chapter only (and not AHDI) you are not eligible for holding office or voting in chapter elections.**

**There are various opportunities for members to support the chapter, such as participating on a committee or working on a short-term project. This is an enjoyable way to network and get ideas for future projects.**

**Please indicate an activity below that interests you:**

- |                                       |                        |                                  |                            |
|---------------------------------------|------------------------|----------------------------------|----------------------------|
| _____ Newsletter                      | _____ Sunshine/Hostess | _____ Library                    | _____ Educational Programs |
| _____ Membership                      | _____ Annual Symposium | _____ Meeting coordinator        | _____ CMT study/mentoring  |
| _____ Nominating committee (July-Nov) |                        | _____ Ways & Means (fundraising) |                            |

Signature: \_\_\_\_\_

Date: \_\_\_\_\_

Please make check payable to **Space Coast Chapter**, and mail this application and your check to:  
Sherry Craig, SCC 9670 Fleming Grant Road, Micco, FL 32976

OFFICE USE ONLY: Date received \_\_\_\_\_ Cash or Check # \_\_\_\_\_ Amount \_\_\_\_\_ Copy to Membership \_\_\_\_\_



## 30th ANNUAL AHDI-FL MEETING & EDUCATIONAL CONFERENCE

May 4-5, 2012 *Awaken Your Spirit!*  
Shores

The Shores Resort & Spa, Daytona Beach

**REGISTRATION FORM**

PLEASE PRINT CLEARLY

**Early registration deadline is March 19, 2012**

Name (as on badge): \_\_\_\_\_ AHDI #: \_\_\_\_\_

Address: \_\_\_\_\_ Email: \_\_\_\_\_

City: \_\_\_\_\_ State: \_\_\_\_\_ Zip Code: \_\_\_\_\_ First Time Attendee: \_\_\_\_\_

Employer: \_\_\_\_\_ Work Phone: \_\_\_\_\_ Home Phone: \_\_\_\_\_

Component Association Affiliation: \_\_\_\_\_ Office Held: \_\_\_\_\_

List any Special Needs: \_\_\_\_\_



*Early registrant names (by March 19, 2012) will be placed in a drawing for a free registration to 2013 AHDI-FL Annual Meeting. Book your room by the April 3 deadline and your name will be placed a second time into the drawing!*

Registration Fees	AHDI Member	Prospective AHDI Member	Student AHDI Member
<b>Annual Meeting Package</b> <b>Includes:</b> All Educational Sessions Friday and Saturday, Exhibit Hall; Friday lunch, and outdoor buffet reception; Saturday annual business meeting breakfast, and lunch.	<ul style="list-style-type: none"> <li>• \$200 (Early)</li> <li>• \$250 (Regular/onsite)</li> </ul> Regular/onsite price after 3/19/2012	<ul style="list-style-type: none"> <li>• \$225 (Early)</li> <li>• \$275 (Regular/onsite)</li> </ul>	<ul style="list-style-type: none"> <li>• \$175 (Early)</li> <li>• \$190 (Regular/onsite)</li> </ul>
<b>Friday Only</b> (Exhibit Hall, and lunch). Does not include outdoor reception buffet.	<ul style="list-style-type: none"> <li>• \$125 (Early)</li> <li>• \$150 (Regular/onsite)</li> </ul>	<ul style="list-style-type: none"> <li>• \$140 (Early)</li> <li>• \$165 (Regular/onsite)</li> </ul>	<ul style="list-style-type: none"> <li>• \$90 (Early)</li> <li>• \$100 (Regular/onsite)</li> </ul>
<b>Saturday Only</b> (Exhibit Hall, breakfast, and lunch)	<ul style="list-style-type: none"> <li>• \$125 (Early)</li> <li>• \$150 Regular/onsite)</li> </ul>	<ul style="list-style-type: none"> <li>• \$140 (Early)</li> <li>• \$165 (Regular/onsite)</li> </ul>	<ul style="list-style-type: none"> <li>• \$90 (Early)</li> <li>• \$100 (Regular/onsite)</li> </ul>

EXTRA TICKETS	# Tickets	Fee	
Friday Lunch		\$35 each	Total =
Friday Outdoor Reception Buffet		\$60 each	Total=
Saturday Breakfast (Annual Business Meeting)		\$25 each	Total=
Saturday Lunch		\$35 each	Total=

TOTAL ENCLOSED: \$ \_\_\_\_\_

Make check payable to AHDI-FL and mail to:

**Ellen Hayes, CMT  
AHDI-FL Treasurer  
10325 SW 103 Lane  
Miami, FL 33176**

\_\_\_\_ Check if you **DO NOT** wish your name to be on the list of registrants made available to exhibitors for advertising purposes.

**HOTEL INFORMATION**

Hotel registration is separate. You must mention AHDI-FL to obtain the special \$124/night discount rate (single-double). Contact the hotel directly for reservations.

**Hotel cut-off date for these special AHDI-FL rates is April 3, 2012. There are limited rooms available at this special rate, after they have been taken, the prevailing rate will be applied.**

The Shores Resort & Spa - [www.shoresresort.com](http://www.shoresresort.com)  
2637 South Atlantic Avenue  
Daytona Beach Shores, FL 32118  
Reservations: 1-866-934-7467

**REGISTRATION DEADLINES**

**Early Registration: Forms must be postmarked no later than March 19, 2012.**

**Regular Registration/Onsite:** Any registration forms **postmarked March 20, 2012, or later** are considered Regular Registration. All onsite registrations are considered Regular Registrations.

**CANCELLATION POLICY**

Request for refunds must be made in writing. **If a request is postmarked and dated prior to April 1**, 80% of the registration fee will be refunded.

**NOTE:** All registrants must abide by AHDI-FL policies that (1) restrict the demonstration of products, solicitation of orders, processing of sales, and distribution of advertising matter to individuals, business firms, manufacturers, and dealers who have contracted and paid for space assignments in the AHDI-FL exhibit hall or advertising space in the AHDI-FL Annual Meeting program, and (2) prohibit the audio or video taping of presentations, except by those authorized by AHDI-FL to do so.

Treasurer's use only:

Date Processed \_\_\_\_\_ Conf # \_\_\_\_\_

**CHARGE TOTAL: \$** \_\_\_\_\_

**CREDIT CARD PAYMENTS**

\_\_\_\_ Visa \_\_\_\_ MasterCard \_\_\_\_ American Express \_\_\_\_ Discover

\_\_\_\_\_  
Credit Card Number

\_\_\_\_\_  
Expiration Date

\_\_\_\_\_  
Print Name as on Card

\_\_\_\_\_  
Signature

\_\_\_\_\_  
Billing address

\_\_\_\_\_  
City State ZIP

Mail completed form to:

**Ellen Hayes, CMT  
AHDI-FL Treasurer  
10325 SW 103 Lane  
Miami, FL 33176**

Thank you for making the decision to attend the Annual AHDI-Florida Meeting & Educational Conference. We appreciate your support! Why not encourage your colleagues to join you?

For more information about the AHDI-FL annual meeting, contact Susan Whatley at [susan.whatley@live.com](mailto:susan.whatley@live.com)

# Birthdays

DeeDee Safikhani, CMT

12/08

Robert Nicholas

12/16

Shirley Ring, CMT

01/14

Karen Wyman

01/21

Tracey Walter, RMT

01/25

Nancy Bass, CMT, AHDI-F

01/31

Susan Crook

02/21

Melissa Campion, CMT

03/14

# Upcoming Events

## December 2011

3 Space Coast Holiday meeting

## January 2012

14 SCC Board of Directors Meeting

## March 2012

10 SCC Spring Symposium

## April 2012

28 SCC Board of Directors Meeting

## May 2012

4-5 AHDI-FL Annual Meeting  
The Shores Resort & Spa, Daytona Beach Shores

DECEMBER 2012						
S	M	T	W	T	F	S
				1	2	3
4	5	6	7	8	9	10
11	12	13	14	15	16	17
18	19	20	21	22	23	24
25	26	27	28	29	30	31

JANUARY 2012						
S	M	T	W	T	F	S
						7
8	9	10	11	12	13	14
15	16	17	18	19	20	21
22	23	24	25	26	27	28
29	30	31				

FEBRUARY 2010						
S	M	T	W	T	F	S
			1	2	3	4
5	6	7	8	9	10	11
12	13	14	15	16	17	18
19	20	21	22	23	24	25
26	27	28	29			

MARCH 2012						
S	M	T	W	T	F	S
				1	2	3
4	5	6	7	8	9	10
11	12	13	14	15	16	17
18	19	20	21	22	23	24
25	26	27	28	29	30	31